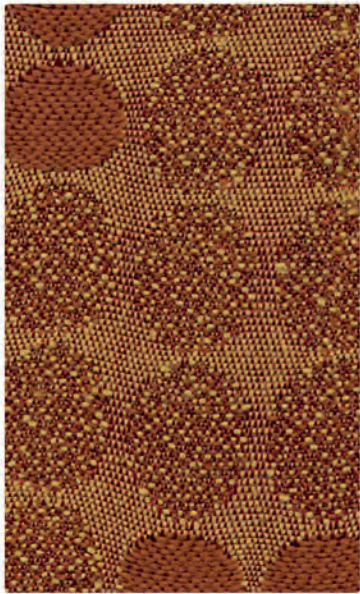


F
A
B
U
L
O
C
I
T
Y

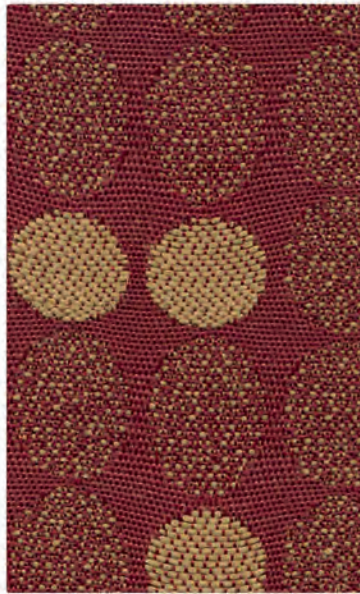


GRADE 1

E
C
L
I
P
S
E



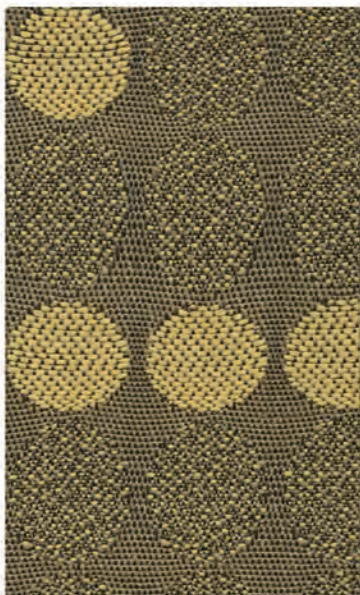
RUST



CORDOVAN



CHOCOLATE



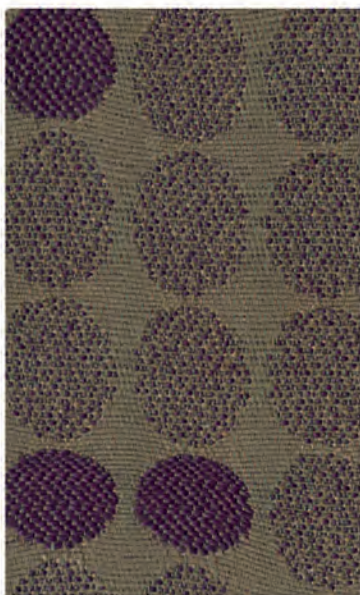
KHAKI



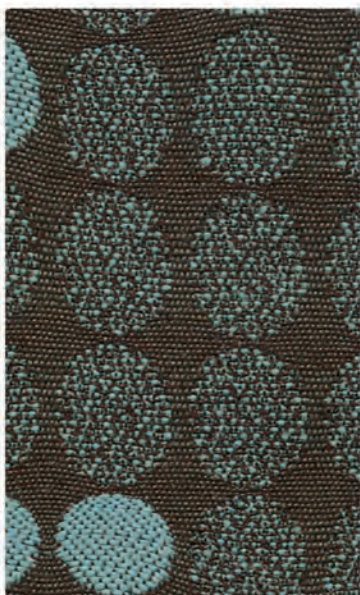
FERN



MINT CIDER



NAPA



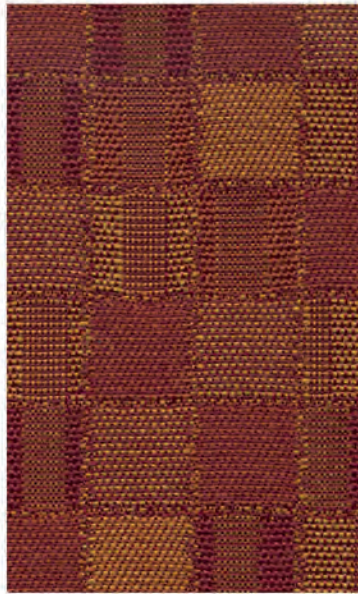
CHOCAQUA



TARTAN BLUE



CHOCOLATE



CORDOVAN



RUST



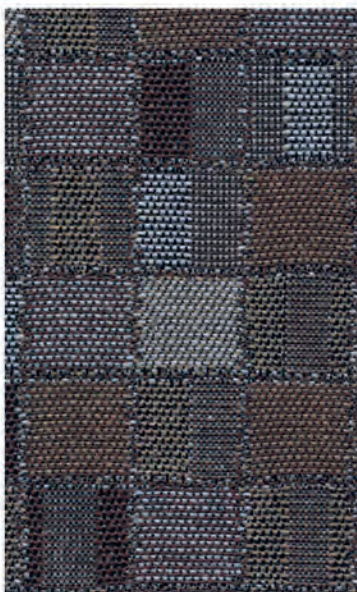
MINT CIDER



FERN



KHAKI



CHOCAQUA



TARTAN SKY



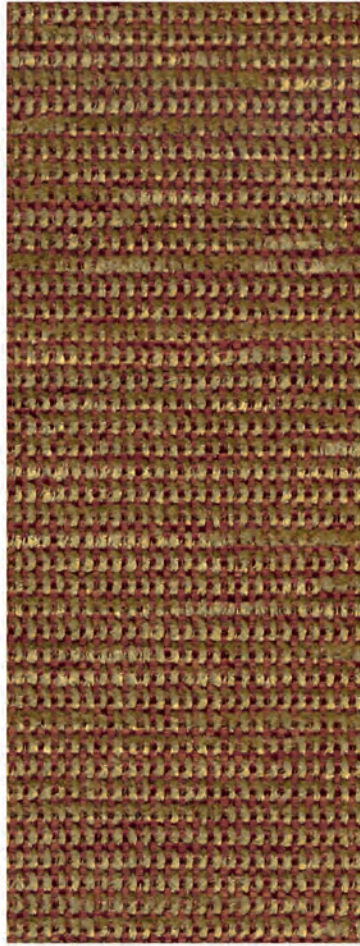
NAPA

EMPIRE

H
I
G
H
L
A
N
D
S



AMBER



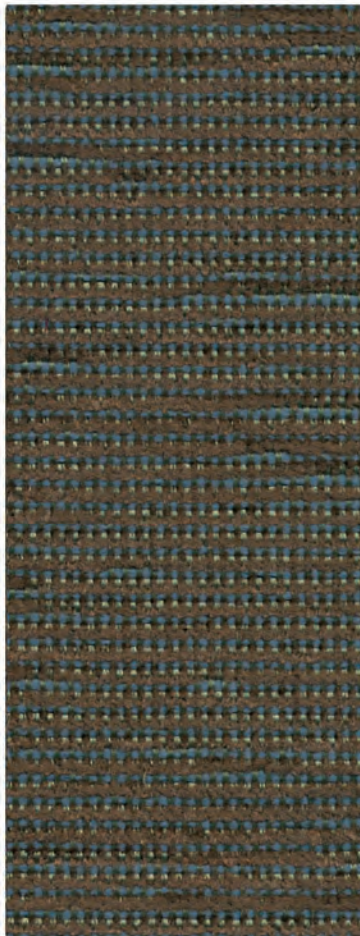
CORDOVAN



CHOCOLATE



VERDIGRIS



TOPAZ



NAVY



CHOCOLATE



CORDOVAN



RUST



FERN



MINT CIDER



KHAKI



SKY



CHOCAQUA



NAPA

J
A
S
M
I
N
E

K
E
N
N
Y
O
N



RUST



CORDOVAN



CHOCOLATE



KHAKI



MINT CIDER



TARTAN BLUE



NAPA



CHOCAQUA



SABLE



CORDOVAN



RUST



KHAKI



FERN



MINT CIDER



TARTAN BLUE



BERYL



NAPA

M
I
R
A
G
E

TECHNICAL DATA

PATTERN	CONTENT	REPEAT	WIDTH	WEIGHT	DESIGN
ECLIPSE	68% OLEFIN 32% POLYESTER	6.80" V 7.00" H	54"	13 OZ PER LIN. YARD	UP-THE-ROLL
EMPIRE	100% POLYESTER	3.6" V 3.3" H	54"	11 OZ PER LIN. YARD	UP-THE-ROLL
HIGHLANDS	72% OLEFIN 28% POLYESTER	N/A	54"	13 OZ PER LIN. YARD	UP-THE-ROLL
JASMINE	100% POLYESTER	9.60" V 9.25" H	54"	11 OZ PER LIN. YARD	UP-THE-ROLL
KENYON	77% OLEFIN 23% POLYESTER	0.10" V 4.50" H	54"	14 OZ PER LIN. YARD	RAILROADED
MIRAGE	100% POLYESTER	2.20" V 3.50" H	54"	10 OZ PER LIN. YARD	UP-THE-ROLL

ABRASION: 50,000 DOUBLE RUBS (HEAVY DUTY)

LIGHTFASTNESS: EXCEEDS 40 HRS. CLASS 5

CROCKING: DRY CLASS 5
WET CLASS 5

CLEANING CODE: WS

FINISH: STAIN REPELLENT

FLAMMABILITY: CAL. 117-E PASS
UFAC CLASS I
ASTM E-84 CLASS A
BS.5852 PASS
PART I:1979 CIGARETTE
NFPA 260-1989 CLASS I



P.O. BOX 200
AXTON, VA 24054
P. 276-650-3356 F. 276-650-3747
TOLL FREE FAX: 800-404-9590
WWW.ACFURNITURE.COM